

ARIMATSU
PREMIUM
BLUE



ARIMATSU
SHIBORI • SOME



有松絞染

ARIMATSU

THE PREMIUM BLUE

Arimatsu Shibori-some (tie-dyes) has been recognized as traditional craft products that the Ministry of Economy, Trade and Industry have authorized as meeting the legal qualification.

The Premium Inigo products by Arimatsu Shibori-some are tied by the highest quality shibori which is integrated with traditional and modern techniques, and dyed by the traditional quality premium indigo. Traditional refers to production that has been carried out for 100 years or more. Traditional indigo blue, signature of Japanese Blue, is the most well-known version of Shibori in Japan.

The Premium Inigo products by Arimatsu Shibori-some are primarily intended for use in daily life. The Premium Indigo manufacturing mostly involves hand-crafting processes, and traditionally used raw materials such as Chita Momen (100% cotton made in Chita Peninsula, Aichi in Japan).





ARIMATSU
PREMIUM
BLUE

SHIBORI

Tying

絞る

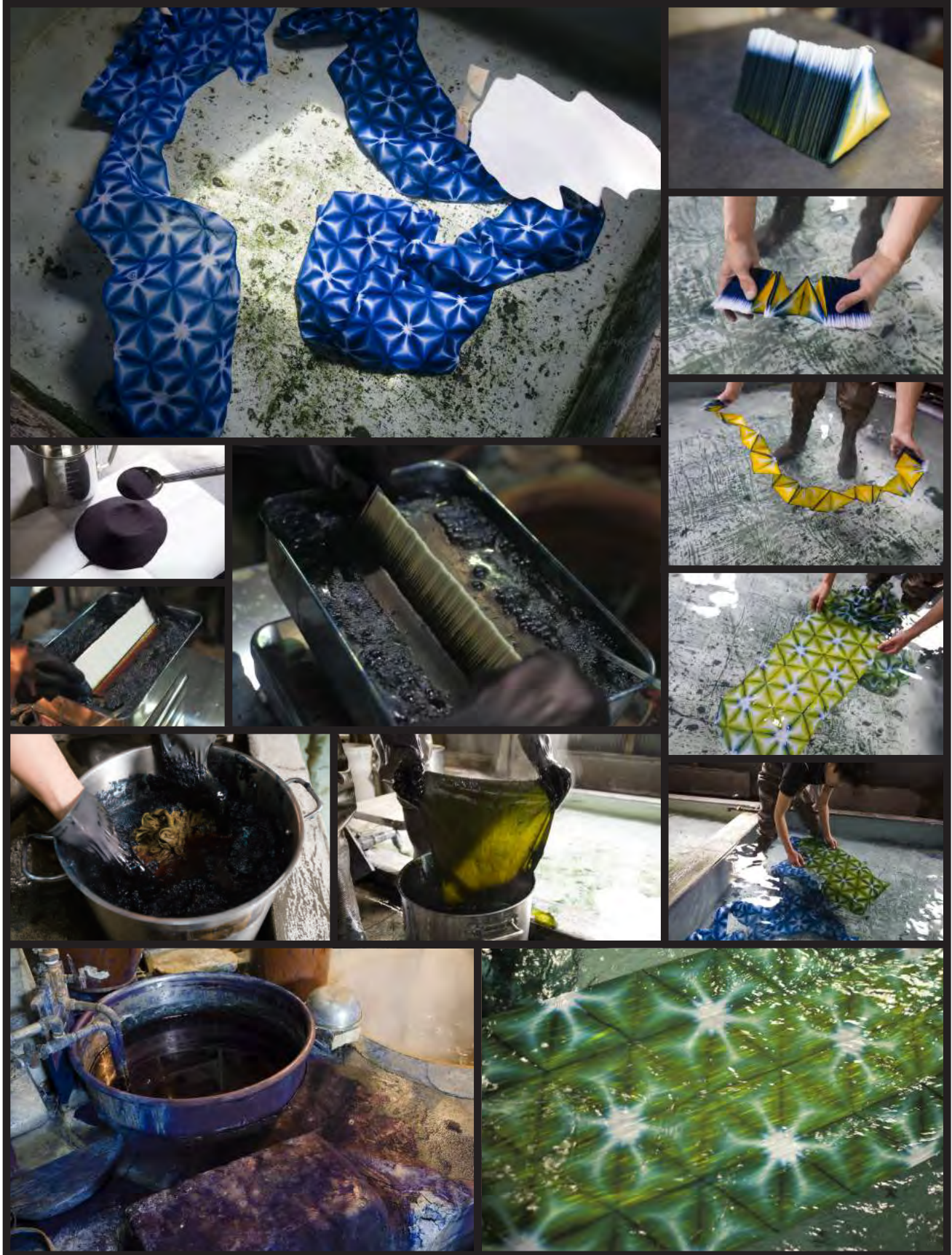




ARIMATSU
PREMIUM
BLUE

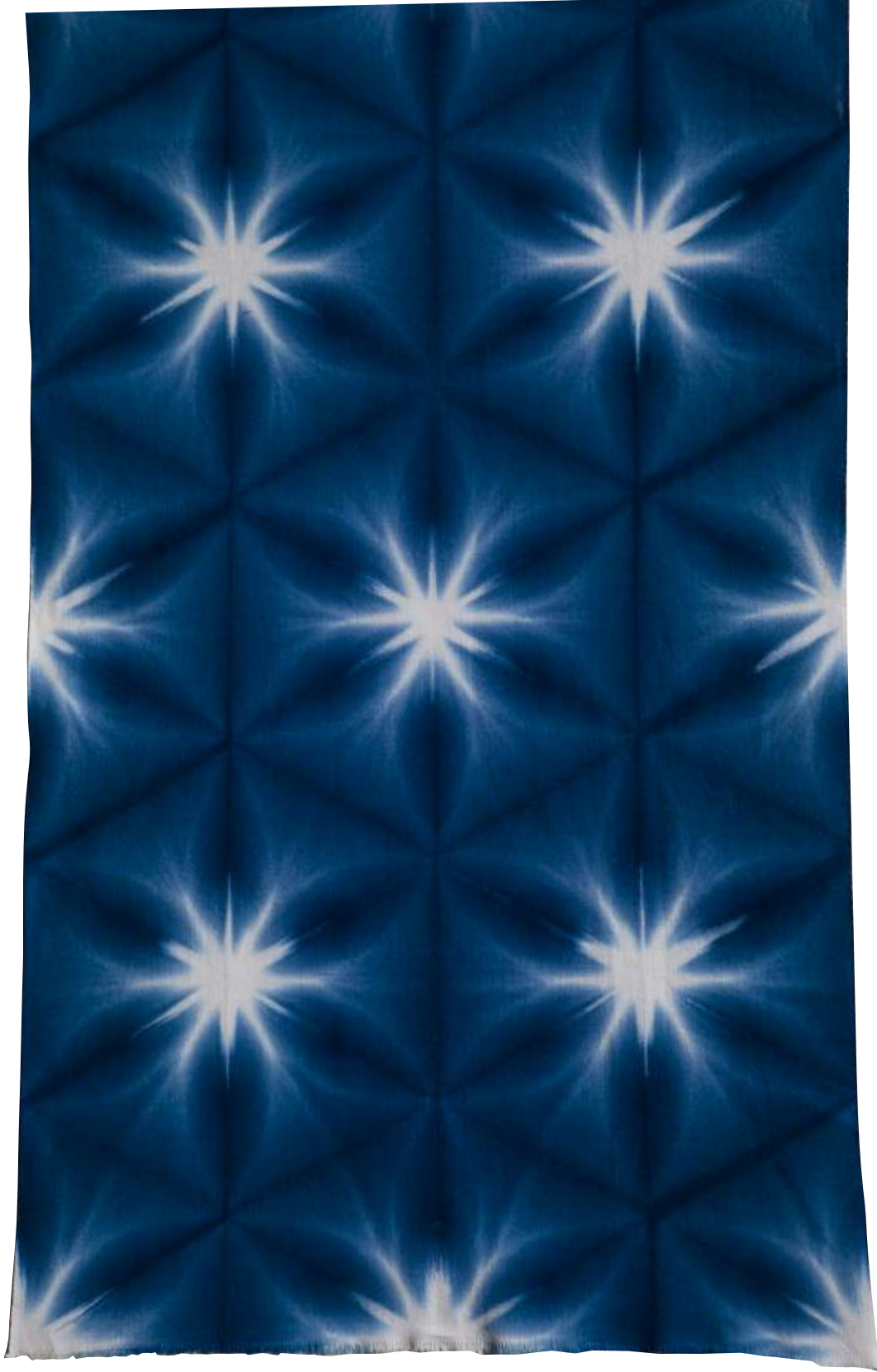
SOME
dyeing

染める





ARIMATSU
PREMIUM
BLUE



ARIMATSU
PREMIUM
BLUE

SHIBORI TENUGUI (JAPANESE COTTON HAND TOWEL)



PIT-01 雪花絞り “Sekka shibori”

Traditional Limited Edition



PIT-02 大帽子絞り “Oh-boushi shibori”



PIT-03 嵐絞り “Arashi shibori”

Traditional Limited Edition



PIT-04 板締め絞り - 丸
“Itajime shibori -Maru-”



PIT-05 嵐絞り “Arashi shibori” A storm
Traditional Limited Edition



PIT-06 板締め絞り - 四角 -
“Itajime shibori -Shikaku-”



PI-T-07
蛍絞り “Hotaru shibori” fireflies
Traditional Limited Edition



PIT-08 竜巻絞り
“Tatsumaki shibori” A tornado



PIT-09 海鼠絞り “Namako shibori”
A pattern of Japanese traditional mud wall



PIT-010
豆絞り “Mame shibori” beans
Traditional Limited Edition



PIT-011 (左下) 板締め絞り - 丸 -
“Itajime shibori -Maru-”
clamping with boards -Circles-



PIT-012 巻上絞り - 千鳥 -
“Makiage shibori -Chidori-”
Binding up -small birds-



PILS-02 ラグ大帽子絞り / Rug "Oh-boushi shibori"



PILS-01 唐松絞り / Rug "Karamatsu shibori"



PILS-03 クッション丸 板締め絞り cushion "Itajime shibori"



PILS-01 玄関ラグ唐松絞り / Rug "Karamatsu shibori"



PILS-04 チェア染めサンプル "Indigo Some "



PILS-04 クッション四角 板締め絞り
Cushion "Itajime shibori"



PIDLS-05 ストール 鎧段絞り / Scarf “Yoroidan shibori”



TRADITIONAL TEXTILE IN CHITA PENINSULA; CHITA MOMEN (COTTON)

In Edo era (about 400 years ago), Chita Momen started to be produced in Chita Peninsula, Aichi prefecture and it still continues to be slowly woven by old shuttle looms made in Meiji era (200 years ago). They weave rolls of a cloth up to 50cm wide, which are referred to as KOHABA, used for Yukata (summer cotton Kimono), Jinbei (informal summer clothes worn by a man), Tenugui (hand towel) and etc. Weavers of Chita Momen have been weaving KOHABA of high quality which is essential for Japanese clothing culture and contributing to the preservation of traditional beauty.



ARIMATSU
PREMIUM
BLUE